



Autumn Term Issue 5

7.10.2016

Newsletter

Aiming for the
Stars

Dear parents, carers and children,

What a fantastic day; I am writing after returning from Porthcurno with Godrevy Class. The sun shone on the Minack and the wind had whipped up the Atlantic to create a fitting backdrop. The children rose to the occasion and demonstrated excellent improvisation skills creating short sketches linked to their topic of space with the resident actors. Lunch on the beach served as a perfect reminder of why we are so lucky to live here and the 157 steps back up to the car park ensured we got our daily quota of exercise too. Thank you to governor Mal Pearce for supporting the trip and in advance to all of you that are helping take Poldhu to Trebah next week.

I have been fortunate to take children out of school twice this week as I accompanied the cross country runners to Camborne on Wednesday and I have to say all of those that took part were a fantastic

advertisement for Gwinear School. Every single one of them gave it their all but more importantly supported each other with fantastic team spirit. Again thanks are due, this time to Jayne who helped transport as we had more children taking part than



Geoff (the minibus) could cope with. Thank you also to parents who were able to come and support their children at Camborne and to all of you that came to see the football team at home to Penponds on Monday. As with the runners the football team showed wonderful sportsmanship, gave 100% and were gracious in their 3-1 defeat.

For those of you that would like to get more involved with school remember that we will be holding our first learning together open afternoon on Wednesday 12 October to which you are all invited. You will be able to take part in a lesson(s) with your child (ren), take a guided tour of our newly designed library and have a cup of something with cake whilst I present some new plans for the year ahead. It's nice to look forward to all the good things that lie ahead at this time of year as the nights start to draw in. I hope you are all managing to make the most of the lingering warmth from the summer and that you get to make the most of what looks like a lovely weekend. If you are the parent of a Yr 4/5 child you will certainly have no problem tempting them out because they loved the day today. Whatever you do enjoy and we will see you all next week.

Mr Gardiner.

THIS TERM'S THEME: *Going for Goals*

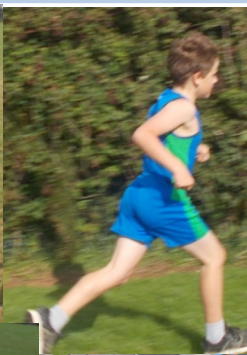
HEADLINES: *The importance of challenge*

WORDS OF WISDOM: *Everyone makes mistakes, admit your own before you point out someone else's*

MUSICIAN OF THE WEEK: *Massive Attack* **VIRTUE OF THE WEEK:** *Learning from our mistakes*



Godrevy class visited the stunning location of the Minack Theatre for a workshop with an amazing backdrop



The first of several cross country running events this year—great results



Diary Dates

October 2016

Mon 10—Poldhu to Trebah Gardens

Wed 12—Learning Together Open Afternoon

Tue 18—Y5 Transition workshop Hayle School

Thur 20—INSET—School closed to pupils

Fri 21—INSET—School closed to pupils

Mon 24—Half term week

November 2016

Fri 4—PTFA Halloween Film night

Thurs 10—Tempest photos for individuals and families

Fri 25—Y5 Transition workshop Hayle School

December 2016

***Fri 2—Xmas Fayre—
new date !!!!!***

Tues 13—Xmas performance

Wed 14—Xmas performance

*Fri 16—Last day before Christmas
Break*

Dates for
the Diary:

**Please continue to check
the dates page as this will
be updated regularly**

Whole School Attendance Target 2016-2017: **96%**

This Weeks Whole School
Attendance Figure:

97.43%



***The football team were in action
for the first match of the season
this week***

Road Closure Notice

This is to notify you of an upcoming project at Gwinear Road Level Crossing by Network Rail. Network Rail is planning to undertake some works to resolve issues they have had in the past with vehicles overhanging the crossing due to the close proximity of a right hand turn into Riviera Produce. This work is designed to remove the speed restriction that has been in place for a number of years on all trains entering / leaving Cornwall on the Main Line which will reduce train journey times. The works are scheduled to commence towards the end of October with a full road closure being in place at the level crossing from **01/11/2016 to 09/12/2016**. These works will involve the movement of the access to Riviera Produce further away from the level crossing, the re-profiling of the road to prevent towing vehicles / caravans from grounding as they cross the railway and improvements to the drainage infrastructure. Network Rail will also be replacing the level crossing itself and improving the quality of the track.



STARS OF THE WEEK

Congratulations to the following children for their fantastic learning. Thank you.

Poldhu

Alfie H for showing amazing curiosity about our world

Bronte for an imaginative story

Kynance

Sophia for working really hard to reach her target

Lincoln for working hard at home and at school

Godrevy

Jack for great effort in maths

Ocean for great effort in P for C discussion

Rinsey

Tehya for helping everyone in homework club

Charlie for trying hard in tables challenges

Virtue Value Awards

Oliver S, Bevin, Abigail, Tom